

Logisnext

NATIONAL ACCOUNTS PROGRAM



National Accounts Program

Welcome to the future of logistics management. The National Accounts Program from Mitsubishi Logisnext Americas is designed to streamline operations, reduce costs, and enhance productivity across your multi-location business.



1
CONTACT

One source. One complete solution.



5
BRANDS

Providing full, custom solutions.



700+
LOCATIONS

Largest national dealer coverage.



1
FOCUS

Driving down total cost of ownership.

Your ONE source, multi-brand provider, offering the broadest range of material handling equipment, automation and digital fleet solutions.



A Legacy of Innovation — Backed by Mitsubishi Heavy Industries

Mitsubishi Logisnext Americas (MLA) is a subsidiary of Mitsubishi Heavy Industries (MHI)—a global leader in engineering, transportation, and industrial innovation for over 130 years. As part of the MHI Group, MLA delivers world-class reliability, cutting-edge technology, and global support. Our legacy of engineering excellence spans aerospace, energy, automation, and logistics—powering progress across industries

Full-Service Material Handling Solutions

- More than 100 years of collective experience
- A complete portfolio of advanced solutions across five leading brands
- Supported by more than 700 experienced dealer locations across North, Central, and South America
- Complete fleet management, digital solutions, financing and comprehensive product support

What's Included

In The National Accounts Program?

The Logisnext National Accounts team is your trusted partner and single source for all your material handling equipment, fleet management and digital solution needs. Our solutions offer peace of mind by providing expert consultants to help streamline your operations.

Exclusive Benefits



Dedicated Team

- Account Manager
- Fleet Manager
- Account Coordinator



Standardized, consistent pricing



A full line of material handling equipment including lithium-ion powered lift trucks



Nationally negotiated and managed parts and service

Fleet Management & Connected Technologies

Keeping pace with the latest technology and digital trends to manage your warehouse operations can be overwhelming. Through an innovative suite of fleet management tools, we can help you optimize the performance of your material handling assets. Whether it's telematics data or centralized equipment management for your fleet, we offer the technology and services you need to stay informed – regardless of location.



Lift Link®

Monitors forklift and operator performance with our exclusive telematics solution
Custom pre-shift checklists and preventative maintenance tracking



Fleet Track®

Connects your employees with your fleet
Track expenses and lifecycle costs



Parts Store

Streamlined parts ordering
Part availability for over 4.2 million replacement parts



Repair Estimator

Manages quotes across your entire company
Customized quotes tailored to fit your needs



OneBill®

Consolidates invoices from multiple locations into one centralized statement
Online access to cost data and transactions by location



Service Dispatch

Request service across multiple locations through a single-point dispatch system
Easily check previous work orders and track dealer response time



Customer Testimonial:

"Jungheinrich offered 12%-26% faster performance which helps operations efficiency."

- Eric Kaufold, Director of Sourcing at Smithfield Foods



Product Portfolio

General Warehousing

Narrow Aisle

Pallet Movers

Indoor/Outdoor

IC Cushion

IC Pneumatic

Rugged Applications

JUNGHEINRICH



Advanced Electric Forklifts
For Greater Productivity

UNICARRIERS
FORKLIFT



Reliable Trucks Backed
By Incredible Service



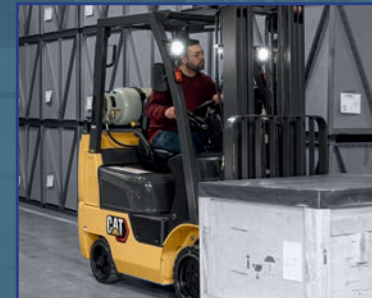
MITSUBISHI
FORKLIFT TRUCKS



CAT
Lift Trucks



Quality Forklifts
You Can Count On



ROCRICH
ASV SOLUTIONS



Full Line Of Tailored
Automation Solutions

Industry Exclusive Support

Our National Accounts Program specialists take a consultative approach—starting with a deep understanding of your operational goals, challenges, and site-specific requirements. From there, we develop a customized fleet strategy that ensures the right mix of equipment, services, and support to drive efficiency and reduce costs.

As part of your partnership with us, you'll gain access to a suite of industry-exclusive advantages, including:



The industry's only standard 5-year / 10,000-hour powertrain warranty - including parts and labor on all Jungheinrich® powertrain components.*



Jungheinrich guarantees our lift trucks will run for 16 hours with no interim charging, no battery changing and no additional charging equipment required - saving valuable operator time and reducing your overall costs.



When you need parts, you need them fast. Our Parts Fast or Parts Free Guarantee means that if we can't get a part to you the same day, you will receive next-day delivery or it's free.*



1,000 hours service interval means more uptime with less time, effort and money spent on maintaining your Jungheinrich lift trucks.

Your Local Solution

- 1 Headquarters
- 700+ Dealer Locations
- 5 Parts Distribution Centers

- Grand Rapids, MI
- Easton, PA
- Indianapolis, IN
- Ontario, CA
- Dallas, TX



Manufacturing in America. Powered by Innovation.
Mitsubishi Logisnext America is driving the future of material handling.

Ready To Learn More?

If you manage a large number of forklifts across multiple locations, becoming a National Account customer is an efficient way to reduce costs and increase productivity. Working together, we can develop the right strategy for your business.

Next Steps:

1.

Initial Discovery

- Free 30-minute discovery meeting
- Initial feedback
- Recommendations and findings

2.

Application Survey

- No obligation formal site visit
- Analysis and findings
- Cost savings recommendations

3.

Analysis / Findings

- Fleet recommendations
- Planning roadmap
- Next steps

4.

Test For Yourself

- Take our Free 7-Day Demo Challenge
- Try our recommended products in your facility/application
- Discover the difference



**For more information, contact our
Logisnext National Accounts Team
to get started:**

NASales@LogisnextAmericas.com

Logisnext

www.LogisnextAmericas.com

© 2025 Mitsubishi Logisnext Americas Inc. CAT, CATERPILLAR, LET'S DO THE WORK, their respective logos, "Caterpillar Yellow", the "Power Edge", and Cat "Modern Hex" trade dress as well as corporate and product identity used herein, are trademarks of Caterpillar Inc., and may not be used without permission. All registered trademarks and all logos are the property of their respective owners, including Jungheinrich®. UniCarriers® is a registered trademark of Mitsubishi Logisnext Co., Ltd. ROCLA trade name, its respective wordmarks and logos as well as corporate and product identity used herein, are trademarks of Mitsubishi Logisnext Europe Oy, and may not be used without permission.

* 5-Year Powertrain Warranty is available on all Jungheinrich Class I and II products sold across the United States, Canada and Mexico.

* Logisnext's Parts Fast or Parts Free Guarantee ensures next-business-day delivery by 5:00 PM of all Jungheinrich, Cat Lift Trucks, UniCarriers Forklift and Mitsubishi Forklift Trucks parts in the United States, or they're free, including freight. For customers in Canada and Mexico, the guarantee ensures shipping of parts within 24 hours from the time the order was placed by the dealer. See your local dealer for program details.