



PNEUMATIC TIRE FORKLIFT

10,000-15,000 KG CAPACITY LP DIESEL PNEUMATIC TIRE MODELS
POWER AND PERFORMANCE FOR THE LONG HAUL.



EXPECT PERFORMANCE.

A POWERFUL TURBOCHARGED ENGINE FOR MAXIMUM PRODUCTIVITY



- Outstanding durability and performance
- Powerful engine
- Solid steel frame for rugged applications
- Lower maintenance for increased uptime

The FD100NM-FD150ANM series delivers the power and performance that tough applications demand.

Enhanced Performance — For More Value:
Mitsubishi Forklift Trucks developed this forklift series to deliver everything you need to tackle tough jobs every day – and at an exceptional value. From a durable design to a fuel-efficient and high-performance engine, these forklifts are ready to work when you are.

Pure Power:
This lift truck series features the proven Mitsubishi 6D16 7.5L turbo, in-line six-cylinder, diesel engine for powerful performance – shift after shift.

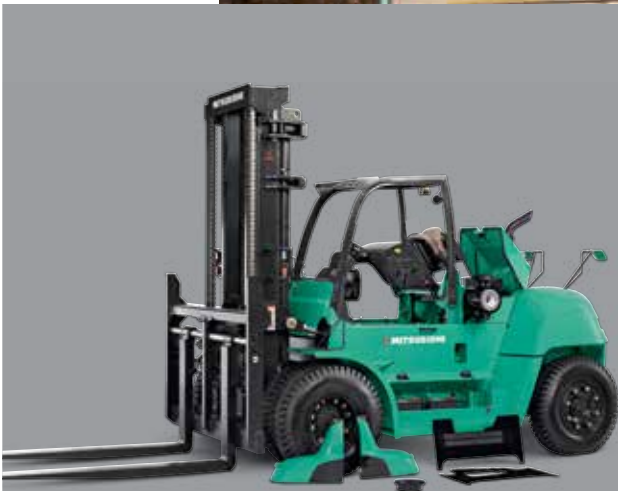
High Performance:
When you need power, you need it now. This truck's turbocharged engine is synchronized with the powershift transmission, providing low-speed torque and allowing for controlled, powerful acceleration for maximum productivity.

Durable Frame:
Tough applications require durable equipment. These forklifts consist of steel frames for added strength and durability:

- More steel in the frame for added resilience
- Rugged design helps minimize stress points in the frame



- Key applications:**
- Lumber
 - Concrete and stone
 - Fabricated metals
 - Industrial machinery
 - Building materials
 - Steel and pipe



Three-Speed Powershift Transmission: The drivetrain is equipped with an automatic transmission that directly converts the power of the engine to torque. With three forward and three reverse speeds, these forklifts provide the power you need to perform in rugged applications.

Maintenance Made Simple:
Simplified maintenance means less downtime and more time on the job. Whether it's scheduled maintenance or a daily inspection, this forklift series makes it easier to get back to work.

- Easy-to-remove floor panel and steel side covers; no tools required
- Greater uptime and lower planned maintenance costs
- Easy access to all major components
- Less time consuming daily inspections
- Extended 500-hour service intervals

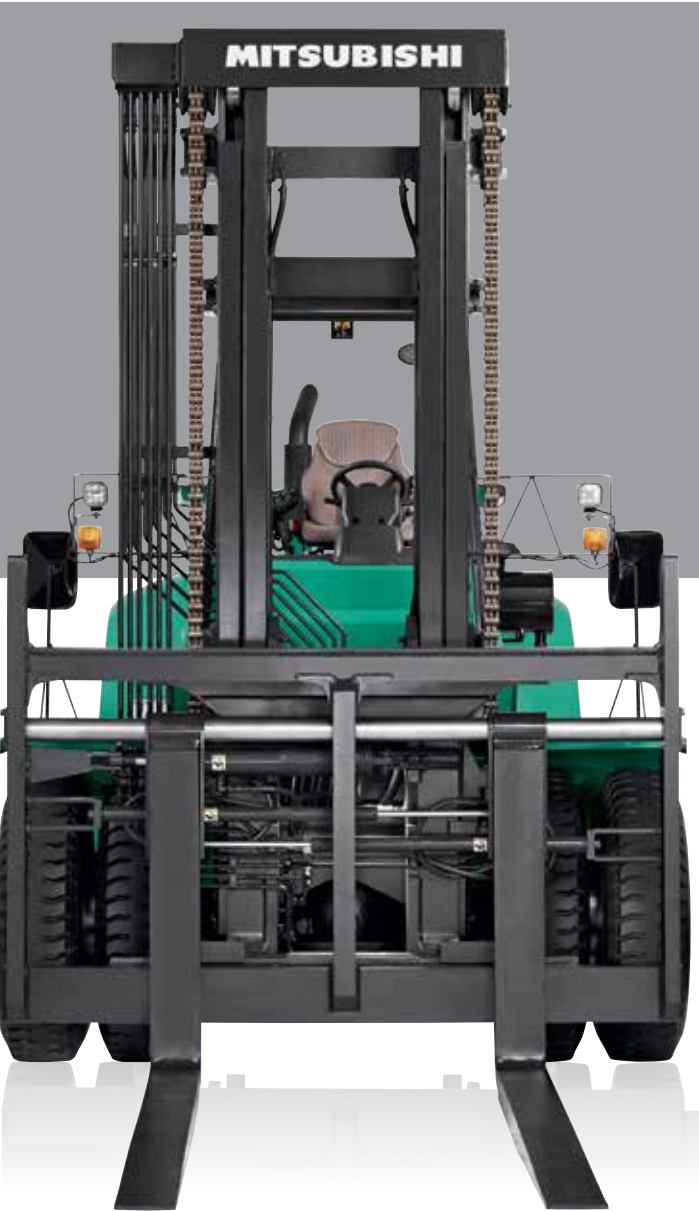


Greater Uptime:
Longer service intervals mean longer run times and more overall productivity.

More Savings:
Minimizing the number of service intervals results in a lower total cost of ownership to keep your forklift running at its best.

COMFORT FEATURES FOR YOUR OPERATORS.

COMBINED WITH THE POWER YOUR BUSINESS DEMANDS



Front-End Attachments:
Further customize this series for your business with optional front-end attachments, such as sidershifters or fork positioners. Ask your local Mitsubishi forklift truck dealer for more information.

Invaluable standard features:

- Full-suspension vinyl seat for a comfortable ride
- Premium LED / LCD display for operator awareness
- Integrated Presence System (IPS) for added security
- Hydrostatic steering for optimal forklift control

Premium Display Panel:

The LED and LCD display panel includes important indicator lights providing information to the operator. These indicators help keep the operator informed about the current status of the forklift, whether it's as simple as the amount of fuel in the truck or something more complex such as an issue with oil pressure or fluid temperatures.



Integrated Presence System (IPS):

This system activates whenever the operator does not fasten the seat belt during operation or leaves the normal operating position without activating the parking brake. This integral computer-based feedback system uses both audible and visual indicators to alert the operator to potentially hazardous situations, increasing operator awareness.

More Comfort, More Efficiency:

This series is built for added comfort. Standard design features such as rubber mounted major components, a fully-insulated steel engine hood, helical transmission gears and fully-enclosed wheel wells all work together to create a smooth driving experience.

Comfortable Ride:

The full-suspension standard vinyl seat provides day-long comfort to operators of various heights.

- Forward and backward adjustment up to 6.5 inches
- Suspension adjustment offers operator support
- Lower back lumbar adjustment
- Fold down pin allows for easy access to the engine compartment during daily checks and maintenance
- An optional premium cloth seat is also available for long shifts or applications with rough surfaces

* Optional premium full-suspension cloth seat shown here

Flexible Cab Options To Meet Your Needs:

For harsh or demanding outdoor applications, optional cab packages provide added protection.



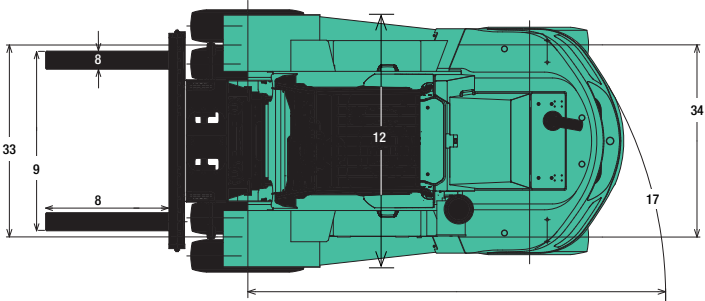
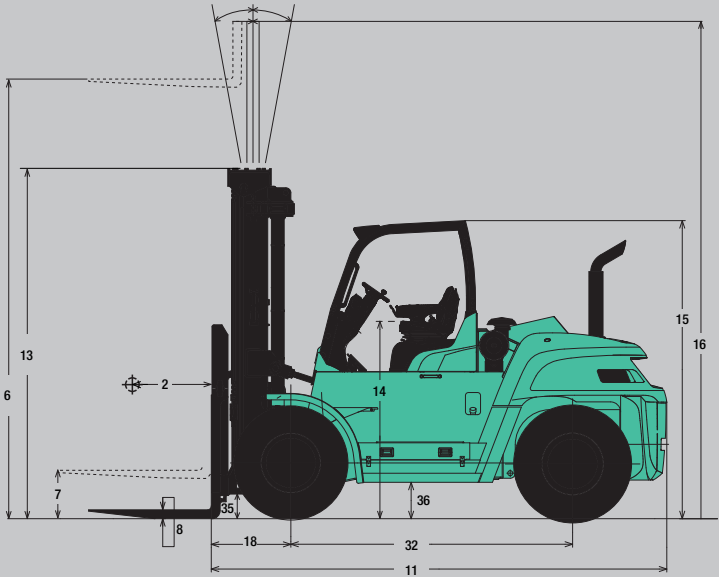
Features	Option 1:	Option 2:	Option 3:
Front windshield	●	●	●
Roof	●	●	●
Back windshield		●	●
Heater		○	●
Steel doors			●
Air Conditioner			○

● = standard ○ = optional

CHARACTERISTICS			FD100NM		FD120NM		FD135NM		FD150ANM	
1	Capacity at rated load center	lb kg	22,000	10,000	26,500	12,000	30,000	13,500	33,000	15,000
2	Capacity at load center – distance	in mm	24	600	24	600	24	600	24	600
3	Power – electric, diesel, gasoline, LP gas		Diesel		Diesel		Diesel		Diesel	
4	Tire type – cushion or pneumatic		pneumatic		pneumatic		pneumatic		pneumatic	
5	Wheels (x=driven) number front / rear		4x / 2		4x / 2		4x / 2		4x / 2	
DIMENSIONS										
6	Maximum fork height (top of fork) ^[1]	in mm	121	3,072	121	3,079	121.5	3,088	121.5	3,088
7	Free fork height ^[1]	in mm	2.8	72	3.1	79	3.5	88	3.5	88
8	Forks – thickness x length x width ^[1]	in mm	2.8x48.0x7.1	72x1,220x180	3.1x48.0x7.1	79x1,220x180	3.5x48.0x7.1	88x1,220x180	3.5x48.0x7.1	88x1,220x180
9	Fork spacing – out-to-out minimum / maximum	in mm	18.7 / 79.1	475 / 2,010	18.7 / 79.1	475 / 2,010	18.7 / 79.1	475 / 2,010	18.7 / 89.0	475 / 2,260
10	Tilt – forward / backward	deg	15° / 12°		15° / 12°		15° / 12°		15° / 12°	
11	Length to fork face	in mm	170	4,310	173	4,390	179	4,535	191	4,840
12	Width with dual drive tires	in mm	99	2,515	99	2,515	103	2,605	103	2,605
13	Height with lowered mast ^[1]	in mm	121.5	3,087	121.5	3,087	131.5	3,332	131.5	3,330
14	Seat height to SIP	in mm	75.4	1,915	75.4	1,915	77.2	1,960	77.2	1,960
15	Height to top of overhead guard	in mm	119	3,015	119	3,020	121	3,060	121	3,060
16	Height with extended mast ^[1]	in mm	177	4,486	177	4,486	194	4,927	194	4,927
17	Minimum outside turning radius	in mm	157	4,000	160	4,060	164	4,160	179	4,550
18	Load moment constant	in mm	30.3	770	30.7	780	31.5	800	31.7	805
19	Minimum aisle – 90° stack – zero clearance without load	in mm	188	4,770	191	4,840	195	4,960	211	5,355
PERFORMANCE										
20	Travel speed loaded / empty	mph km/h	15.2 / 18.6	24.5 / 30.0	14.0 / 18.3	22.5 / 29.5	13.0 / 18.6	21.0 / 30.0	12.1 / 18.3	19.5 / 29.5
21	Lift speed loaded / empty	fpm m/s	90.6 / 98.4	0.46 / 0.50	76.8 / 0.50	0.39 / 0.50	66.9 / 82.7	0.34 / 0.42	65.0 / 82.7	0.33 / 0.42
22	Lowering speed loaded / empty	fpm m/s	90.6 / 98.4	0.46 / 0.50	90.6 / 98.4	0.46 / 0.50	94.5 / 82.7	0.48 / 0.42	94.5 / 82.7	0.48 / 0.42
23	Drawbar pull – loaded at 1 mph (1.6 km)	lb N	16,410	73,000	16,410	73,000	15,060	67,000	15,060	67,000
24	Drawbar pull –loaded at maximum	lb N	23,830	106,000	23,830	106,000	21,580	96,000	21,580	96,000
25	Gradeability – loaded at 1 mph (1.6 km)	%	31.9		27.7		22.8		21.3	
26	Gradeability – loaded at maximum	%	42.1		42.3		33.2		31.0	
WEIGHT										
27	Empty	lb kg	32,080	14,550	34,830	15,800	38,430	17,430	39,600	17,960
28	Axle load – with rated load front / rear	lb kg	48,760 / 5,320	22,120 / 2,430	55,365 / 5,965	25,095 / 2,705	61,745 / 6,685	27,910 / 3,020	65,950 / 6,650	29,920 / 3,040
29	Axle load – without load front / rear	lb kg	15,940 / 16,140	7,230 / 7,320	15,870 / 18,960	7,200 / 8,600	16,920 / 21,510	7,675 / 9,755	17,905 / 21,695	8,120 / 9,840
CHASSIS										
30	Tire size – front, standard duals	in	10–20–14PR		10–20–16PR		12-20-18PR		12-20-18PR	
31	Tire size – rear tires	in	10–20–14PR		10–20–16PR		12-20-18PR		12-20-18PR	
32	Wheelbase	in mm	110	2,800	110	2,800	110	2,800	122	3,100
33	Tread width – front, standard duals	in mm	74.8	1,900	74.8	1,900	75	1,905	75	1,905
34	Tread width – rear tires	in mm	77.4	1,965	77.4	1,965	75.8	1,925	75.8	1,925
35	Ground clearance – at lowest point at mast	in mm	10.2	260	10.2	260	12.0	305	11.8	300
36	Ground clearance – at center of wheelbase	in mm	12.2	310	12.2	310	14	355	14	355
37	Service brake		air over hydraulic power brakes		air over hydraulic power brakes		air over hydraulic power brakes		air over hydraulic power brakes	
38	Parking brake		hand, mechanical		hand, mechanical		hand, mechanical		hand, mechanical	
POWERTRAIN										
39	Engine model		Mitsubishi Fuso 6D16-TL		Mitsubishi Fuso 6D16-TL		Mitsubishi Fuso 6D16-TL		Mitsubishi Fuso 6D16-TL	
40	Continuous output S.A.E. gross	HP kW	134	100	134	100	134	100	134	100
41		at r.p.m.	2,200		2,200		2,200		2,200	
42	Maximum torque S.A.E. gross	lb-ft N-m	361	490	361	490	361	490	361	490
43		at r.p.m.	1,200		1,200		1,200		1,200	
44	Cylinder / displacement	cu in L	6 / 460.0	6 / 7.5	6 / 460.0	6 / 7.5	6 / 460.0	6 / 7.5	6 / 460.0	6 / 7.5
45	Transmission type		powershift		powershift		powershift		powershift	
46	Number of speeds forward / reverse		3 / 3		3 / 3		3 / 3		3 / 3	
47	Battery	volts	24		24		24		24	
48	Relief pressure for attachments	psi bar	2,990	206	2,990	206	2,990	206	2,990	206
49	Noise level – at operator's ear Leq	dB(A)	84.9		84.9		84.9		84.9	

Call-out numbers shown in the diagram below correspond to the first column of the specifications chart.

FD100NM- FD150ANM



SAFETY STANDARDS

These trucks meet American National Standards Institute/Industrial Truck Standards Development Foundation, ANSI/ITSDF B56.1. UL-Classified by Underwriters Laboratories, Inc., as to fire and electric shock hazard only; Type E, EE (optional), Industrial Trucks. Users should be aware of, and adhere to, applicable codes and regulations regarding operator training, use, operation and maintenance of powered industrial trucks, including:

- ANSI/ITSDF B56.1.
- NFPA 505, fire safety standard for powered industrial trucks -type designations, areas of use, maintenance and operation.
- Occupational Safety and Health Administration (OSHA) regulations that may apply.

Specifications, equipment, technical data, photos and illustrations based on information at time of printing and subject to change without notice. Some products may be shown with optional equipment.

[1] Heights with shaft type forks on a standard two-stage mast. Optional hook type forks will change dimensions slightly.

FD100NM-FD150ANM

10,000-15,000 KG CAPACITY PNEUMATIC TIRE FORKLIFT

Delivering Exceptional Value

More Than 296,000 Parts To Keep You Running

Mitsubishi Forklift Trucks offers several parts programs, all designed to bring you top performance and convenience for your material handling needs. Contact your local dealer to put our services to work for you.

Support To Fit Your Operation

Find out why more companies are relying on Mitsubishi forklift truck dealers to keep their fleet operating at top performance. Our efficiency provides customers with a better return on investment, and qualified service technicians, diverse parts inventory and unparalleled selection of service options can help reduce your total cost of ownership.

Extensive Dealer Network

The Mitsubishi forklift truck dealer network is dedicated to finding the right forklift solution for your business. With more than 300 dealer locations, you can rely on your local dealer to provide the service you need when you need it most.



Manufactured with superior quality and exceptional value, Mitsubishi forklift trucks are supported by an extensive dealer and field support network located throughout North and South America. Don't forget to ask your local Mitsubishi forklift truck dealer about details on factory retail programs, financing plans and additional options and dealer services like planned maintenance and operator training.

