



# READ THIS FIRST

For System Coordinator Responsible for Lift Link System Implementation



Scan to access installation guides.

# Wireless Material Handling Telematics

- Access Control
- Electronic Safety Checklists
- Impact Management
- Planned Maintenance Control
- Work and Life Cycle Management

## Components

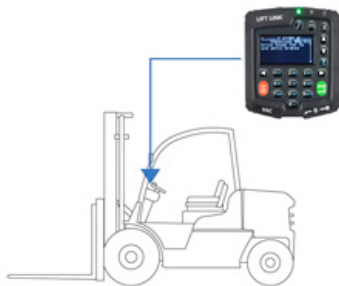
### Site Kit:

- Installation Guides
- Lift Link Jack with USB
- Access ID Reader with USB for PC

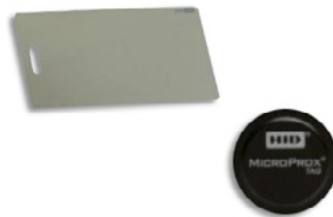


## System Overview

Lift Link Device



Access ID



Software via Web Browser on PC



# Installation Sequence

## 1. Install Vehicle Hardware\* (Lift Link Device, etc.)

See: Lift Link Installation Guide

- Install all cables and mounting hardware as instructed in the Lift Link Installation Guide.
- Match kit install type (wired, OEM harness) with vehicle type.



## 2. Follow Lift Link Device Configuration Wizard

See: Lift Link Hardware User's Guide

- Log into the Lift Link device via the keypad using the ACCESS CODE printed for you (or emailed to you) separately.
- Follow on-screen instructions. When prompted to input the VAC ID, be sure to input the last 5 digits of the truck Serial Number.
- After successful configuration, installer logs off using Lift Link device's "logoff" button.



## 3. Operators Begin Using the System in "Any ID" Mode

The Lift Link device will ship in "Any ID" Mode, a default "open access" setting that allows any operators with an Access ID to access the vehicle as Standard Operators. Once logged in, the Operator can (but does not have to) complete checklists. Operators are automatically associated with the Lift Link software as their Access IDs are read by the Lift Link device. Impacts and other actionable features will not lock the vehicle until Any ID mode is turned off.



## 4. Access Lift Link Portal

Instructions on how to log in to the Lift Link Portal will be emailed to you separately. As the first person to log in, you will be granted System Coordinator privileges, including the ability to add additional software users and define their software access privileges. Online help is available at any time through the menu selections.





**LIFT TRUCK SOLUTIONS®**

© 2023 Mitsubishi Logisnext Americas Inc. LTS Lift Truck Solutions® is a registered trademark of Mitsubishi Logisnext Co., Ltd.

This document contains confidential and/or proprietary information and may be reproduced for internal training purposes only. This document may not be reproduced in part, or shown, or in any way disclosed to any third party, without the express written consent of Mitsubishi Logisnext Americas, Inc.