

# EFG C15-C18L

## Electric Cushion Tire Lift Trucks

3,000 – 4,000 lbs. capacity

 **JUNGHEINRICH®**





▲ WARNING  
No smoking  
No open flames  
No hot surfaces

ORBIS RPM

SIZE 44

Gest

J



## Leading Performance. Low Cost Of Ownership.

The Jungheinrich® EFG C15-C18L models of sit-down electric counterbalanced lift trucks are an ideal material handling solution for a wide range of industrial applications.

Whether you are shuttling goods, loading and unloading trailers or moving large loads from dock to stock, these 36 and 48-Volt AC lift trucks set the industry standard – with 3,000 - 4,000 lb. capacities and reaching lift heights of up to 217 inches.

### Benefits



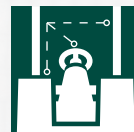
Highly efficient  
for long  
run times



High Lift  
Heights –  
Up To 217"



Excellent  
Visibility



Exceptional  
Operator  
Comfort



500-Hour  
Service  
Intervals

**JUNGHEINRICH**

# Exceptional Run-times. More Productivity.

## A new generation of warehouse products

Take your operation to a higher level, thanks to their excellent performance and high efficiency of the EFG C15-18L series. Never settle for stopping a shift to re-charge your lift trucks.

- Optimized runtime on a single battery charge
- No interim charging required
- No battery changing
- No additional battery needed

## How do we do it?

The pioneer of 3-phase AC technology, Jungheinrich has been perfecting electric lift truck technology for more than 60 years, allowing us to set the standard for high performance.

## Our AC technology in action:

### Advanced Drive System

Rapid acceleration, smooth directional changes, precise speed control and handling are just a few of the advantages of the Jungheinrich EFG C15-C18L models' AC drive system. Individual performance features such as travel speed, acceleration rate and regenerative braking response can all be customized to fit your application requirements, giving you the ultimate control.

### All AC Hydraulic System

Jungheinrich's all AC hydraulic system provides smooth load handling and precise load placements. Hydraulic cushioning is built into the mast staging function to minimize unnecessary shocks to the truck and to the load.

### Enhanced Hydrostatic Steering

Promotes more precise control during operations with minimal effort. The compact steering wheel design gives operators more room.



**JUNGHEINRICH**



**JUNGHEINRICH**

HANDLE

HANDLE

# A Comfortable Shift. From Start To Finish.



## Adjustable Comfort

### Spacious Operator Compartment

Combining superior comfort and functionality allows for increased operator efficiency.

### Standard Adjustable Seat

The full-suspension vinyl seat can be easily adjusted to suit operators' unique preferences.



The display includes date, clock, speedometer, vehicle hour meter, warning icons and more.

## Excellent Operator Awareness

- Vibrant 4-inch, full-color display provides vital information
- The precisely-engineered overhead guard offers optimized visibility while racking or stacking.

# Intelligent Warehouse Solutions.

## Smart Technology

The EFG C15-C18L models are equipped with top-of-the-line technology to keep your operators productive and secure.

- **Adaptable Performance Modes** - optimize your performance and efficiency by selecting one of the pre-set operating modes.
- **Operator Presence System** - This integrated, computer-based feedback system uses both audible and visual indicators to alert the operator of potential hazardous situations.
  - When the operator is not in the normal operating position, the presence system electronically discontinues powered-travel movement and load handling functions.
  - When an operator is in the normal operating position, but the seat belt is not buckled, an audible warning will sound and a visible indicator will appear, alerting the operator.

## Security Features

- Steering wheel-mounted horn
- Emergency power disconnect
- Two LED front work lights
- Three-point access
- Optional additional horn packages
- Optional Light Packages

## Lithium-Ion Availability:

- Greater power efficiency
- Run for 24 hours a day, 7 days a week with opportunity charging
- Zero battery maintenance
- No watering
- No more battery exchanges
- No gas emissions, odor or acidification
- No special charging areas or equipment needed
- Longer lasting life cycles (up to 3,000)
- 5-year warranty on batteries
- 2-year warranty on chargers

\*Ask your local dealer about additional safety accessories and options.

Three point access provides a secure way to get on and off the lift truck.







**JUNGHEINRICH**

**JUNGHEINRICH**

Corbi Plastica



# Maintenance-Friendly. More Uptime.

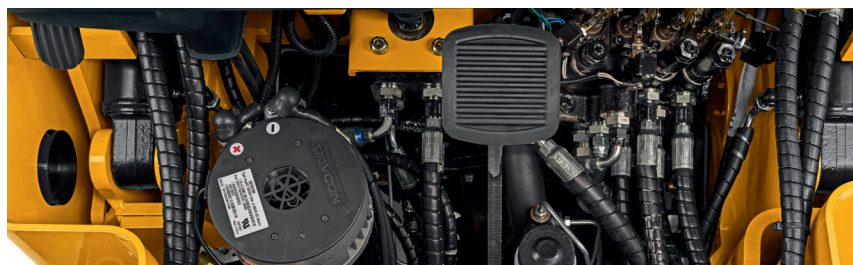
With easy-to-remove component covers, you have quick access to service the EFG C15-C18L. And, with 500-hour service intervals, you can confidently move your business forward.

## 500-Hour Service Intervals

- Lower overall cost of ownership
- Increased uptime

## Easy Serviceability

- Tool-free access to key service components
- Display-based maintenance reminders



## Reliable Design

- Cowl design and steering column
- Rerouted wiring integrated into the overhead guard – for a streamlined view and an added protection of your investment
- Excellent visibility through the mast and overhead guard









# Options Tailored To Your Application.

Custom-Fit To Your Operation.

## Drive-In Rack Options

- On a standard truck that is 86" high by 37" wide, the 29" narrow section of the OHG is positioned between 50" and 77.5" high on the truck.

## Special Application Packages

- Freezer package for intermittent use below 14° F
- Optional U.L. type ES, EE ratings

## Electronic Back-Up "Smart" Alarm

- Ideal for freezer and cold applications
- Automatically adjust its volume level to suit the environment
- -40°F to 185°F temperature operating range

## Control Features

- Foot direction control
- Steering wheel knob

## Variety Of Light Packages

These models can be customized with blue spot lights, strobe lights and more.

## Additional Productivity Features

- USB port
- Cloth covered seat
- Side rear view mirrors
- Clipboard holder
- Fire extinguisher
- Electronic backup "smart" alarm
- LED combo lights
- Strobe lights (Amber, Blue)
- Language markings

# WHO IS Jungheinrich?

## THE LEADING ELECTRIC LIFT TRUCK MANUFACTURER

**Our name may sound strange – JUNGHEINRICH (Young-Hine-Rick).**

But it's a name you should know. We're the world's leading brand of electric lift trucks. While others are new to electric, our 5<sup>th</sup> generation technology and more than 60 years of electric lift truck design experience allow us to deliver two shifts on one charge – guaranteed on many Jungheinrich products – for greater productivity.

**Strong Local Support And Expertise.**

- » 340+ dealer locations throughout the US, Canada and Mexico
- » 24-hour parts delivery guarantee
- » Industry's only 1,000-hour service intervals



Note: Equipping this model (these models) with a power source (e.g. Lithium-ion, Hydrogen Fuel cell, etc.) that has not been previously approved by the factory is considered a modification. Per OSHA 1910.178 and ANSI/ITSDF B56.1, please consult with your factory representative prior to installing any non-OEM power source that has not been previously approved.

\*Orders must be placed through your local dealer by 5:00 p.m. Eastern Standard Time, and you must advise the dealer at the time of order that the part is to be expedited under the terms of the guarantee. There are some exclusions, including parts over 100 lbs and paint, chemicals or lubricants that require special handling. Ask your dealer for a full list of terms and conditions for the Parts Fast or Parts Free Guarantee. Programs may be subject to change without notice and may vary by region. Please ask your local Jungheinrich dealer for complete terms and conditions.

1-877-JH-FORKS  
[www.logisnextamericas.com/jungheinrich](http://www.logisnextamericas.com/jungheinrich)



JECM0305 04/2021 © 2021 Jungheinrich. All rights reserved. All registered trademarks are the property of their respective owners, including Jungheinrich and its logos. Some products may be shown with optional equipment.