



ELECTRIC PNEUMATIC TIRE FORKLIFT

5,000-7,000 LB CAPACITY

WORK SMART TO WORK HARD



ENHANCED POWER, ENHANCED PRODUCTIVITY.

THE COMPLETE ELECTRIC PNEUMATIC TIRE FORKLIFT SOLUTION
YOU HAVE BEEN WAITING FOR.



An Investment To Count On

Designed for durability and reliability, the robust construction of these units can help to reduce repair and replacement needs and can increase the residual market value of the truck. Simple plug-in diagnostics, easy access to major components and the easy-to-use multifunction display help to reduce downtime and maintain efficient performance.

Performance On Demand

The powerful and responsive AC drive system provides performance levels offering a zero emissions alternative to traditional IC customers that have high expectations when it comes to productivity. Various integrated systems allow for intelligent control and adjustment in a wide array of operating environments.

Comfort And Safety

The comfortable, quiet and heavily-equipped operator compartment allows for precise (and low effort) control to provide confident, stress-free and enjoyable operation.

High efficiency, durable build quality and easy servicing to help minimize downtime, maintain productivity and lower total cost of ownership in some of the most demanding applications in the market.

Common Industries:

- Hardware and building materials
- Wholesale trade - durable and non-durable goods
- Trucking and warehousing
- General merchandising
- Food and kindred products
- Bottling and beverage distribution



| Standard Features | Standard | Optional |
|---|-----------------|-----------------|
| 80V AC drive system | ● | |
| Preset ECO and PRO performance modes | ● | |
| Side battery extraction | ● | |
| Multifunction, interactive, full-color display | ● | |
| Cornering speed control | ● | |
| Standard wet disc brakes | ● | |
| TruckTool diagnostics | ● | |
| Integrated Presence System (IPS) | ● | |
| Full-suspension vinyl Grammar MSG65 Seat | ● | |
| Integrated LED worklights | ● | |
| Common Options | Standard | Optional |
| Fingertip control armrest | | ● |
| Alternative hydraulic controls (dual joysticks) | | ● |
| Battery extraction options | | ● |
| Additional lights and awareness options | | ● |
| PIN code access | | ● |
| Automatic tilt centering | | ● |
| Panel cabins | | ● |
| Side shifters | | ● |
| Fork positioners | | ● |
| Multiple tire options | | ● |



Ask your local dealer about the available options for improved performance, productivity and operator comfort.

BUILT FOR SUCCESS.

MOVING YOUR PRODUCT TO MOVE YOUR BOTTOM LINE.



Control At Your Fingertips

Responsive, ergonomically designed controls, all-around visibility and an advanced all-wheel steering system enable agile maneuverability in applications where it is needed the most.

- All-wheel steering offers good grip, smooth turning and extremely agile steering aided by the 100+ degree rear steer axle that enables side turns with minimal rear movement.
- Standard pre-set ECO and PRO modes allow the truck to be set at the level that is required by the application, but also the level necessitated by the experience of the operator.
- Spring-force fingertip controls on the ergonomic armrest provide comfortable hand positioning and easily achieved directional control and hydraulic activity.





The Cornering Office

The physical design of the truck and integrated systems help to ensure that the operator can comfortably move your product at the same levels at the end of the shift that they started the shift at.

- Quiet drive units keep the driver comfortable and can help increase awareness of surrounding areas.
- Spacious operator compartment is rubber-mounted to further minimize noise and vibration during operation.
- Easy and smooth entry/exit to/from the operator compartment.
- Emphasis on storage space for tools, mobile devices, bottles and other personal items make the truck a comfortable office space for operators.
- For low-light conditions, standard light-packages are included which provide forward and reverse LED lights for increased visibility.



Smart Systems And Options For The Way You Work

Fully integrated travel and hydraulic systems allow for intelligent, real time adjustment to meet the needs of the application as the operator does what it takes to get the job done.

- The AC drive system automatically provides additional torque when operating on a ramp to maintain speed, even when carrying large loads.
- The Sensitive Drive System is designed for rapid adaptation of performance in reaction to the commands of the operator, ensuring smooth starts, stops and hydraulic activity.
- Front wheels can be locked automatically at small steering angles or manually via an optional pedal function to increase traction on slippery surfaces.
- Reactionary hydraulic system proactively adjusts to the load weight for smooth and precise control of the mast and forks.
- Load control is increased with automatic hydraulic control tuning when lifting over certain heights, and passive sway control allows for stress on the mast to be absorbed by the chassis.

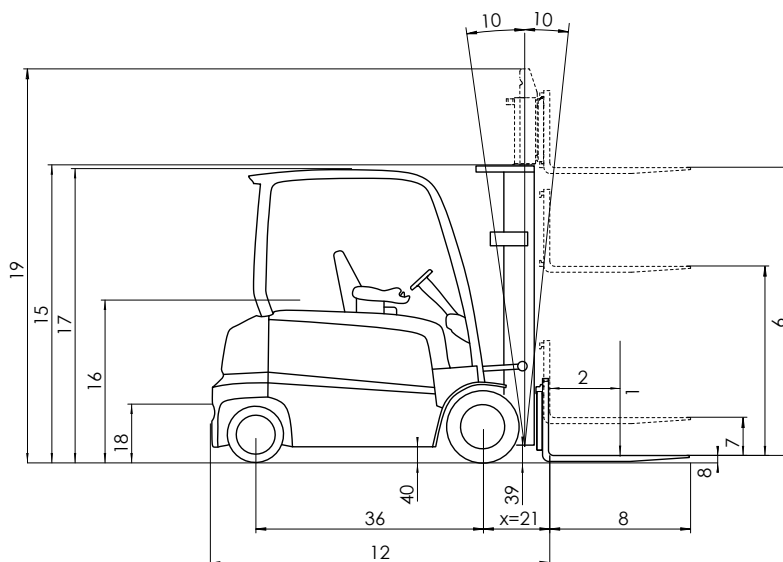
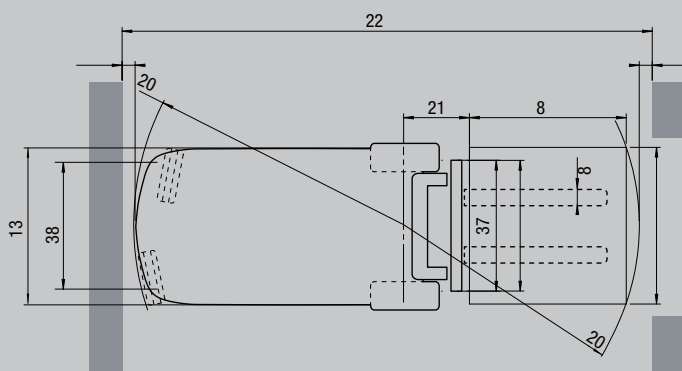
| CHARACTERISTICS | | | FB25ACN | | FB25AN | | FB30ACN | |
|--------------------|--|----------|--------------------|-------------------|--------------------|-------------------|--------------------|-------------------|
| 1 | Capacity at rated load center | lb kg | 5,000 | 2,500 | 5,000 | 2,500 | 6,000 | 3,000 |
| 2 | Load center -- distance | in mm | 19.70 | 600 | 19.70 | 600 | 19.70 | 600 |
| 3 | Power -- diesel, gasoline, LP gas, electric | | Electric | | Electric | | Electric | |
| 4 | Tire type -- cushion, solid pneumatic | | Solid Pneumatic | | Solid Pneumatic | | Solid Pneumatic | |
| 5 | Wheels (x=driven) number front / rear | | 2x/2 | | 2x/2 | | 2x/2 | |
| DIMENSIONS | | | | | | | | |
| 6 | Maximum fork height (top of forks) | in mm | 171.5 | 4,355 | 171.5 | 7,355 | 170.3 | 4,325 |
| 7 | Free lift | in mm | 3.9 | 100 | 3.9 | 100 | 3.9 | 100 |
| 8 | Forks -- thickness x length x width | in mm | 1.6x3.9x42.1 | 40x100x1070 | 1.6x3.9x42.1 | 40x100x1070 | 1.8 x 4.7 x 42.1 | 45x120x1070 |
| 9 | Fork spacing -- out-to-out minimum / maximum | in mm | 7.9 - 38.4 | 200 - 975 | 7.9 - 38.4 | 200 - 975 | 9.4 - 38.4 | 240 - 975 |
| 10 | Tilt -- forward / backward | deg° | 6/8 | | 6/8 | | 6/8 | |
| 11 | Overall length (with 42" long forks) | in mm | 136.0 | 3,455 | 141.6 | 3,596 | 137.1 | 3,486 |
| 12 | Length to fork face (includes fork thickness) | in mm | 94.1 | 2,389 | 99.6 | 2,530 | 95.2 | 2,417 |
| 13 | Overall width with standard tires | in mm | 46.9 | 1,190 | 46.9 | 1,190 | 46.9 | 1,190 |
| 14 | Overall width with wide stance tires | in mm | 50.5 | 1,283 | 50.5 | 1,283 | 50.5 | 1,283 |
| 15 | Height to top of lowered mast | in mm | 84.4 | 2,145 | 84.4 | 2,145 | 85.2 | 2,165 |
| 16 | Seat height to SIP | in mm | 49.6 | 1,260 | 49.6 | 1,260 | 49.6 | 1,260 |
| 17 | Height to top of overhead guard | in mm | 88.2 | 2,240 | 88.2 | 2,240 | 88.2 | 2,240 |
| 18 | Drawbar pin height | in mm | 15.6 | 395 | 15.6 | 395 | 15.6 | 395 |
| 19 | Height with mast raised | in mm | 171.5 | 4,355 | 171.5 | 4,355 | 170.3 | 4,325 |
| 20 | Minimum outside turning radius | in mm | 75.6 | 1,920 | 81.3 | 2,064 | 75.6 | 1,920 |
| 21 | Load distance, axle to fork face | in mm | 18.7 | 476 | 18.7 | 476 | 19.8 | 504 |
| 22 | Minimum aisle -- 90° stack - zero clearance without load | in mm | 144.1 | 3,660 | 149.8 | 3,805 | 145.3 | 3,690 |
| PERFORMANCE | | | | | | | | |
| 24 | Travel speed -- loaded / empty | mph km/h | 12.4 | 20 | 12.4 | 20 | 12.4 | 20 |
| 26 | Lift speed -- loaded / empty | fpm m/s | 98 / 128 | 0.5 / 0.65 | 98 / 128 | 0.5 / 0.65 | 89 / 118 | 0.45 / 0.6 |
| 27 | Lowering speed -- loaded / empty | fpm m/s | 108 / 98 | 0.55 / 0.5 | 108 / 98 | 0.55 / 0.5 | 98 / 89 | 0.5 / 0.45 |
| 30 | Maximum gradeability -- loaded / empty | % | 23 / 38 | | 23 / 38 | | 20 / 33 | |
| WEIGHT | | | | | | | | |
| 31 | Empty -- with minimum weight battery | lb kg | 10,106 | 4,584 | 10,443.3 | 4,737.0 | 11,512.5 | 5,222.0 |
| 32 | Axle load -- with rated load (front / rear) | lb kg | 13959.7 / 1739.4 | 6332 / 789 | 13968.5 / 1904.8 | 6336 / 684 | 16215 / 1935.7 | 7355 / 878 |
| 33 | Axle load -- without rated load (front / rear) | lb kg | 5053 / 5134.6 | 2292 / 2329 | 5344 / 5015.5 | 2424 / 2275 | 5410.144 / 5128.9 | 2454 / 2780 |
| CHASSIS | | | | | | | | |
| 34 | Tire size -- front | in mm | 23 x 9-10 | | 23 x 9-10 | | 23 x 10- 12 | |
| 35 | Tire size -- rear | in mm | 18 x 7-8 | | 18 x 7-8 | | 18 x 7-8 | |
| 36 | Wheelbase | in mm | 62.4 | 1,585 | 68.1 | 1,730 | 62.4 | 1,585 |
| 37 | Tread width -- front, standard tires | in mm | 38.8 | 985 | 38.8 | 985 | 37.4 | 950 |
| 38 | Tread width -- rear tires | in mm | 38.2 | 970 | 38.2 | 970 | 38.2 | 970 |
| 39 | Ground clearance -- at lowest point at mast | in mm | 4.1 | 105 | 4.1 | 105 | 4.5 | 115 |
| 40 | Ground clearance -- at center of wheelbase | in mm | 4.8 | 122 | 4.8 | 122 | 4.8 | 122 |
| 41 | Service brakes | type | Hydraulic | | Hydraulic | | Hydraulic | |
| 42 | Parking brakes | type | Automatic | | Automatic | | Automatic | |
| ELECTRICAL | | | | | | | | |
| 43 | Battery type | | lead-acid | | lead-acid | | lead-acid | |
| 44 | Battery capacity at 6 hr. discharge rate | Ah kWh | 620.0 | 49.6 | 775.0 | 62.0 | 620.0 | 49.6 |
| 45 | Battery weight, minimum | Ah kWh | 3,262.8 | 1,480 | 3,880.1 | 1,760.0 | 3,262.8 | 1,480.0 |
| 46 | Battery weight, maximum | lb kg | 3,615.5 | 1,640 | 4,321.0 | 1,960.0 | 3,615.6 | 1,640.0 |
| 47 | Battery compartment size, maximum | lb kg | 28.0 x 40.5 x 30.9 | 711 x 1,028 x 784 | 33.7 x 40.5 x 30.9 | 855 x 1,028 x 784 | 28.0 x 40.5 x 30.9 | 711 x 1,028 x 784 |
| 48 | Drive motor capacity (60 min. rating) | in mm | 2 x 10.7 | 2 x 8 | 2 x 10.7 | 2 x 8 | 2 x 10.7 | 2 x 8 |
| 49 | Lift output (15% rating) | HP kW | 27.9 | 20.8 | 27.9 | 20.8 | 34.2 | 25.5 |
| 50 | Drive / hydraulic controls | HP kW | AC | | AC | | AC | |
| 51 | Relief pressure for attachments | PSI Mpa | 2,683.2 | 18.5 | 2,683.2 | 18.5 | 2,683.2 | 18.5 |
| 52 | Flow rate for attachments | gpm lpm | 113.6 | 30 | 113.6 | 30.0 | 113.6 | 30.0 |

NOTE: These specifications assume the use of drive axles, tires and tilt angles specified. Maximum converted value to gradeability at maximum torque of the traction motor. Any modification to specifications, or any other combination of specifications made after the shipment of the truck, requires prior written approval from Mitsubishi Logisnext Americas Inc. (See ANSI/ITSDF B56.1.) Also be advised that overall operating visibility may be affected by the mast configuration and mast options of your truck. Therefore, you may need to add ancillary [auxiliary] devices or modify your operating practices. Consult your dealer for further information.

| FB30AN | | FB35AN | | |
|--------|--------------------|-------------------|--------------------|-------------------|
| 1 | 6,000 | 3,000 | 7,000 | 3,175 |
| 2 | 19.70 | 600 | 19.70 | 600 |
| 3 | Electric | | Electric | |
| 4 | Solid Pneumatic | | Solid Pneumatic | |
| 5 | 2x/2 | | 2x/2 | |
| 6 | 170.3 | 4,325 | 171.5 | 4,345 |
| 7 | 3.9 | 100 | 3.9 | 100 |
| 8 | 1.8x4.7x42.1 | 45x120x1070 | 1.8x4.7x42.1 | 45x120x1070 |
| 9 | 9,4 - 38,4 | 240 - 975 | 9,4-38,4 | 240 - 975 |
| 10 | 6/8 | | 6/8 | |
| 11 | 142.7 | 3,624.0 | 142.7 | 3,624 |
| 12 | 100.7 | 2,558 | 100.7 | 2,558 |
| 13 | 46.9 | 1,190 | 46.9 | 1,190 |
| 14 | 50.5 | 1,283 | 50.5 | 1,283 |
| 15 | 85.2 | 2,165 | 90.2 | 2,291 |
| 16 | 49.6 | 1,260 | 49.6 | 1,260 |
| 17 | 88.2 | 2,240 | 88.2 | 2,240 |
| 18 | 15.6 | 395 | 15.6 | 395 |
| 19 | 170.3 | 4,325 | 171.1 | 4,345 |
| 20 | 81.3 | 2,064 | 81.3 | 2,064 |
| 21 | 19.8 | 504 | 19.8 | 504 |
| 22 | 150.8 | 3,830 | 150.8 | 3,830 |
| 24 | 12.4 | 20 | 11.1 | 18 |
| 26 | 89 / 118 | 0.45 / 0.6 | 89 / 118 | 0.45 / 0.6 |
| 27 | 98 / 89 | 0.5 / 0.45 | 98 / 89 | 0.5 / 0.45 |
| | 20 / 34 | | 18 / 31 | |
| 31 | 11,530.2 | 5,230.0 | 12,464.9 | 5,654.0 |
| 32 | 16122.4 / 1849.7 | 7313 / 839 | 18074 / 1992.98 | 8186 / 904 |
| 33 | 5668.1 / 5690.131 | 2571 / 2581 | 5851.1 / 6475 | 2654 / 2937 |
| 34 | 23 x 10-12 | | 23 x 10-12 | |
| 35 | 18 x 7-8 | | 18 x 7-8 | |
| 36 | 68.1 | 1,730 | 68.1 | 1,730 |
| 37 | 37.4 | 950 | 37.4 | 950 |
| 38 | 38.2 | 970 | 38.2 | 970 |
| 39 | 4.5 | 115 | 4.5 | 115 |
| 40 | 4.8 | 122 | 4.8 | 122 |
| 41 | Hydraulic | | Hydraulic | |
| 42 | Automatic | | Automatic | |
| 43 | lead-acid | | lead-acid | |
| 44 | 775.0 | 62.0 | 775.0 | 62.0 |
| 45 | 3,880.1 | 1,760.0 | 3,880.1 | 1,760.0 |
| 46 | 4,321.0 | 1,960.0 | 4,321.1 | 1,960.0 |
| 47 | 33.7 x 40.5 x 30.9 | 855 x 1,028 x 784 | 33.7 x 40.5 x 30.9 | 855 x 1,028 x 784 |
| 48 | 2 x 10.7 | 2 x 8 | 2 x 10.7 | 2 x 8 |
| 49 | 34.2 | 25.5 | 34.2 | 25.5 |
| 50 | AC | | AC | |
| 51 | 2,683.2 | 18.5 | 2973.2 | 20.5 |
| 52 | 113.6 | 30.0 | 113.6 | 30 |

Call-out numbers shown in the diagram below correspond to the first column of the specifications chart.

FB25AN- FB35AN



SAFETY STANDARDS

These trucks meet American National Standards Institute/Industrial Truck Standards Development Foundation, ANSI/ITSDF B56.1. UL-Classified by Underwriters Laboratories, Inc., as to fire and electric shock hazard only; Type E, EE (optional), Industrial Trucks. Users should be aware of, and adhere to, applicable codes and regulations regarding operator training, use, operation and maintenance of powered industrial trucks, including:

- ANSI/ITSDF B56.1.
- NFPA 505, fire safety standard for powered industrial trucks -type designations, areas of use, maintenance and operation.
- Occupational Safety and Health Administration (OSHA) regulations that may apply.

Specifications, equipment, technical data, photos and illustrations based on information at time of printing and subject to change without notice. Some products may be shown with optional equipment.

Note: Equipping this model (these models) with a power source (e.g. Lithium-ion, Hydrogen Fuel cell, etc.) that has not been previously approved by the factory is considered a modification. Per OSHA 1910.178 and ANSI/ITSDF B56.1, please consult with your factory representative prior to installing any non-OEM power source that has not been previously approved.

FB25AN-FB35AN

5,000-7,000 LB CAPACITY ELECTRIC PNEUMATIC TIRE FORKLIFT

Delivering Exceptional Value

More Than 296,000 Parts To Keep You Running

Mitsubishi Forklift Trucks offers several parts programs, all designed to bring you top performance and convenience for your material handling needs. Contact your local dealer to put our services to work for you.

Support To Fit Your Operation

Find out why more companies are relying on Mitsubishi forklift truck dealers to keep their fleet operating at top performance. Our efficiency provides customers with a better return on investment, and qualified service technicians, diverse parts inventory and unparalleled selection of service options can help reduce your total cost of ownership.

Extensive Dealer Network

The Mitsubishi forklift truck dealer network is dedicated to finding the right forklift solution for your business. With more than 300 dealer locations, you can rely on your local dealer to provide the service you need when you need it most.



Manufactured with superior quality and exceptional value, Mitsubishi forklift trucks are supported by an extensive dealer and field support network located throughout North and South America. Don't forget to ask your local Mitsubishi forklift truck dealer about details on factory retail programs, financing plans and additional options and dealer services like planned maintenance and operator training.