

AXiA ES

PEDESTRIAN STACKER

1.2 – 1.6 tons

**MAXIMIZE YOUR STORAGE
MAXIMIZE YOUR PRODUCTIVITY**

The compact AXiA ES stacker range is built to maximise your storage space, working in extremely narrow spaces thanks to the shortest chassis on the market.

SPECIFICATIONS

- SBP12N3
- SBP12N3R
- SBP16N3
- SBP16N3S
- SBP16N3SR

SBP12-16N3(R)(S) Series



**WHEN
RELIABILITY IS
EVERYTHING...**

AXiA ES

SBP12-16N3(R)(S) Series

PEDESTRIAN STACKER

1.2 – 1.6 tons



Designed to fight against the elements such as dirt, debris, dust and water thanks to its sealed protective chassis and waterproof components (rated to IP54), AXiA ES will work dependably with minimum maintenance.

BRAKES

- **Parking brake**
Automatically activated when necessary on ramps.

DRIVE

- **Powerful AC drive motor**
Excellent traction and ramp performance, smooth, quiet, controlled operation, extended shift length and less maintenance requirements.
- **Sealed transmission**
Shock-resistant, quiet and requires little maintenance.
- **Sensitive Drive System (SDS)**
An intuitive driver-assist system for increased awareness. Performance is managed according to steer angle and the velocity of finger controls.



ELECTRICAL AND CONTROL SYSTEMS

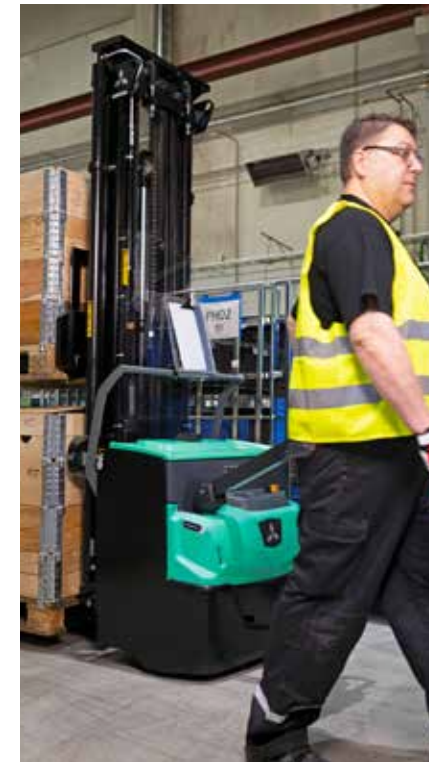
- **Battery rollers**
Changing batteries is quicker and easier.
- **Micro-computer**
Includes hour meter, battery indicator and cut out.
- **Programmable controller**
Acceleration, speed and braking can be adjusted to suit the application and operator's preferences.
- **Battery discharge indicator**
Fitted as standard for battery protection and to help prevent deep discharge.

FORKS AND MAST

- **Robust forks**
Strong welded construction with rounded tips for effortless pallet entry.
- **Tapered forks**
Access to pallets in racks or block stacks is quicker and easier.

FRAME AND BODY

- **High visibility**
Operator has a good view of the fork tips and working area.
- **Sealed chassis**
Internal components are protected against water, dirt, dust and debris, helping to reduce downtime and servicing.
- **Water-resistant design**
Water is kept away from key electrical parts for truck protection and durability.
- **Low center of gravity**
Operation is smooth and stable.
- **Two linked castor wheels**
In addition to the load wheels for added stability. Helps to increase comfort for the driver and protection for the load.
- **Operate in low temperatures**
Can be used for cold storage applications in temperatures as low as -10 °C with sealed components to help prevent internal condensation.
- **Side stabilizers**
Aids the truck in lifting higher capacities at higher lift heights. (Option)



AXIA ES

SBP12-16N3(R)(S) Series

PEDESTRIAN STACKER

1.2 – 1.6 tons

OPERATOR COMPARTMENT AND CONTROLS

- **Choice of two pre-set operating modes (ECO and PRO)**
Enabled via key switch to enhance energy efficiency and productivity.
- **Left-handed or right-handed controls**
The tiller arm's versatile design allows for operation from either side.
- **Low to the ground**
Ground clearance is only 20 mm.
- **PIN-code access**
Helps to prevent unauthorized truck use and keeps you aware of who's operating at all times.
- **Ergonomic ErgoSteer tiller head**
Excellent designed, weather-protected and impact-resistant tiller head with large, easy-to-reach buttons placed at a patented ergonomic distance to help reduce fatigue. It is also IP65 rated.
- **Emergency stop**
Fast and easy to engage.
- **Ergonomic rubber hand grips**
Handles are comfortable and easy to hold.
- **Battery discharge indicator**
Fitted as standard for battery protection and to help prevent deep discharge.

STEERING SYSTEM

- **Small turning radius**
Combine this with the compact chassis and operation is possible in tight areas allowing for optimized use of warehouse space.

OTHER FEATURES

- **RapidAccess features**
These allow quick and easy entry to all areas for checks and maintenance.



VDI - PERFORMANCE & DIMENSIONS

CHARACTERISTICS				Mitsubishi Forklift Trucks	Mitsubishi Forklift Trucks
1.1	Manufacturer			SBP12N3	SBP16N3
1.2	Manufacturer's model designation			Battery	Battery
1.3	Power source			Pedestrian	Pedestrian
1.4	Operator type				
1.5	Load capacity	Q	kg	1200	1600
1.6	Load center distance	c	mm	600	600
1.8	Load wheel axle to fork face (forks lowered)	x	mm	750	750
1.9	Wheelbase	y	mm	1330	1330
WEIGHT					
2.1b	Truck weight without load, with maximum battery weight		kg	1020	1020
2.2	Axle loadings with nominal load & maximum battery weight, drive / load side		kg	810 / 1410	870 / 1755
2.3	Axle loadings without load & with maximum battery weight, drive / load side		kg	730 / 295	730 / 295
WHEELS, DRIVE TRAIN					
3.1	Tires: PT = Power Thane, Vul = Vulkollan, P = Polyurethane, N = Nylon, R = Rubber drive / load side			Vul / Vul	Vul / Vul
3.2	Tire dimensions, drive side		mm	230 x 70	230 x 70
3.3	Tire dimensions, load side	ø	mm	85 x 90	85 x 75
3.4	Castor wheel dimensions (diameter x width)		mm	125 x 60	125 x 60
3.5	Number of wheels, load / drive side (x = driven)			1 + 1x / 2	1 + 1x / 4
3.6	Track width (center of tires), drive side	b10	mm	515	515
3.7	Track width (center of tires), load side	b11	mm	385	385
DIMENSIONS					
4.2b	Height	h1	mm	see tables	see tables
4.3	Free lift	h2	mm	see tables	see tables
4.4	Lift height	h3	mm	see tables	see tables
4.5	Height with mast extended	h4	mm	see tables	see tables
4.9	Height of tiller arm / steering console (min./max.)	h14	mm	865 / 1420	865 / 1420
4.15	Fork height, fully lowered	h13	mm	90	90
4.19	Overall length	l1	mm	19009	1900
4.20	Length to fork face	l2	mm	7509	750
4.21	Overall width	b1/b2	mm	800	800
4.22	Fork dimensions (thickness, width, length)	s / e / l	mm	56 / 186 / 1150	56 / 186 / 1150
4.24	Fork carriage width	b3	mm	750	750
4.25	Outside width over forks (minimum / maximum)	b5	mm	570	570
4.32	Ground clearance at center of wheelbase, (forks lowered)	m2	mm	20	20
4.33c	Working aisle width (Ast) with 1000 x 1200 mm pallets, load crosswise, platform up/down	Ast	mm	2445	2445
4.34c	Working aisle width (Ast) with 800 x 1200 mm pallets, load lengthwise, platform up/down	Ast	mm	2374	2374
4.35	Turning radius	Wa	mm	1572	1572
PERFORMANCE					
5.1	Travel speed, with / without load		km / h	6.0 / 6.0	6.0 / 6.0
5.2	Lifting speed, with / without load		m / s	0.16 / 0.33	0.15 / 0.32
5.3	Lowering speed, with / without load		m / s	0.46 / 0.35	0.48 / 0.34
5.8	Maximum gradeability with / without load		%	8 / 15	8 / 15
5.10	Service brakes (mechanical / hydraulic / electric / pneumatic)			Electric	Electric
ELECTRIC MOTORS					
6.1	Drive motor capacity (60 min. short duty)		kW	1.0	1.0
6.2	Lift motor output at 15% duty factor		kW	2.2	3.2
6.4	Battery voltage/capacity at 5-hour discharge		V/Ah	24 / 250	24 / 250 - 375
6.5	Battery weight		kg	210	210
MISCELLANEOUS					
8.1	Type of drive control			Stepless	Stepless
10.7	Level of noise at the ear level of the driver according to EN 12 053:2001 and EN ISO 4871 in work LpAZ		dB(A)	64	
10.7.3	Hand-arm vibration (EN 13 059:2002)			< 2.5	< 2.5

Continuing improvement may lead to changes in these specifications

AXIA ES

SBP12 - 16N3 Series

**PEDESTRIAN
STACKER**

1.2 - 1.6 tons



SBP12-16N3

VDI - PERFORMANCE & DIMENSIONS

CHARACTERISTICS			
1.1	Manufacturer		Mitsubishi Forklift Trucks
1.2	Manufacturer's model designation		SBP12N3R
1.3	Power source		Battery
1.4	Operator type		Pedestrian / Stand-on
1.5	Load capacity	Q	kg 1200
1.6	Load center distance	c	mm 600
1.8	Load wheel axle to fork face (forks lowered)	x	mm 750
1.9	Wheelbase	y	mm 1330
WEIGHT			
2.1b	Truck weight without load, with maximum battery weight		kg 1100
2.2	Axle loadings with nominal load & maximum battery weight, drive / load side		kg 840 / 1400
2.3	Axle loadings without load & with maximum battery weight, drive / load side		kg 860 / 320
WHEELS, DRIVE TRAIN			
3.1	Tires: PT = Power Thane, Vul = Vulkollan, P = Polyurethane, N = Nylon, R = Rubber drive / load side		Vul / Vul
3.2	Tire dimensions, drive side		mm 230 x 70
3.3	Tire dimensions, load side	ø	mm 85 x 90
3.4	Castor wheel dimensions (diameter x width)		mm 125 x 60
3.5	Number of wheels, load / drive side (x = driven)		1 + 1 x / 2
3.6	Track width (center of tires), drive side	b10	mm 515
3.7	Track width (center of tires), load side	b11	mm 385
DIMENSIONS			
4.2b	Height	h1	mm see tables
4.3	Free lift	h2	mm see tables
4.4	Lift height	h3	mm see tables
4.5	Height with mast extended	h4	mm see tables
4.9	Height of tiller arm / steering console (min./max.)	h14	mm 1155 / 1550
4.15	Fork height, fully lowered	h13	mm 90
4.19	Overall length	l1	mm 2020 / 2500
4.20	Length to fork face	l2	mm 870 / 1350
4.21	Overall width	b1/b2	mm 800
4.22	Fork dimensions (thickness, width, length)	s / e / l	mm 56 / 186 / 1150
4.24	Fork carriage width	b3	mm 750
4.25	Outside width over forks (minimum / maximum)	b5	mm 570
4.32	Ground clearance at center of wheelbase, (forks lowered)	m2	mm 20
4.33c	Working aisle width (Ast) with 1000 x 1200 mm pallets, load crosswise, platform up/down	Ast	mm 2550 / 3050
4.34c	Working aisle width (Ast) with 800 x 1200 mm pallets, load lengthwise, platform up/down	Ast	mm 2660 / 2980
4.35	Turning radius	Wa	mm 1692 / 2172
PERFORMANCE			
5.1	Travel speed, with / without load	km / h	6.0 / 6.0
5.2	Lifting speed, with / without load	m / s	0.16 / 0.33
5.3	Lowering speed, with / without load	m / s	0.46 / 0.35
5.8	Maximum gradeability with / without load	%	8 / 15
5.10	Service brakes (mechanical / hydraulic / electric / pneumatic)		Electric
ELECTRIC MOTORS			
6.1	Drive motor capacity (60 min. short duty)	kW	1.0
6.2	Lift motor output at 15% duty factor	kW	2.2
6.4	Battery voltage/capacity at 5-hour discharge	V/Ah	24 / 150 - 250
6.5	Battery weight	kg	210
MISCELLANEOUS			
8.1	Type of drive control		Stepless
10.7	Whole-body vibration (EN 13 059:2002)	dB(A)	0.8
10.7.3	Hand-arm vibration (EN 13 059:2002)		< 2.5

Continuing improvement may lead to changes in these specifications

AXIA ES

SBP12N3R

**PEDESTRIAN
STACKER WITH
FOLDING PLATFORM**

1.2 tons



SBP12N3R

VDI - PERFORMANCE & DIMENSIONS

CHARACTERISTICS				Mitsubishi Forklift Trucks	Mitsubishi Forklift Trucks
1.1	Manufacturer			SBP16N3S	SBP16N3SR
1.2	Manufacturer's model designation			Battery	Battery
1.3	Power source			Pedestrian	Pedestrian / Stand-on
1.4	Operator type				
1.5	Load capacity	Q	kg	1600	1600
1.6	Load center distance	c	mm	600	600
1.8	Load wheel axle to fork face (forks lowered)	x	mm	750	750
1.9	Wheelbase	y	mm	1395	1395
WEIGHT					
2.1b	Truck weight without load, with maximum battery weight		kg	1288	1440
2.2	Axle loadings with nominal load & maximum battery weight, drive / load side		kg	1045 / 1870	1215 / 1985
2.3	Axle loadings without load & with maximum battery weight, drive / load side		kg	892 / 396	1020 / 420
WHEELS, DRIVE TRAIN					
3.1	Tires: PT = Power Thane, Vul = Vulkollan, P = Polyurethane, N = Nylon, R = Rubber drive / load side			Vul / Vul	Vul / Vul
3.2	Tire dimensions, drive side		mm	230 x 70	230 x 70
3.3	Tire dimensions, load side	ø	mm	85 x 75	85 x 75
3.4	Castor wheel dimensions (diameter x width)		mm	125 x 60	125 x 60
3.5	Number of wheels, load / drive side (x = driven)			1 + 1 x / 4	1 + 1 x / 4
3.6	Track width (center of tires), drive side	b10	mm	515	515
3.7	Track width (center of tires), load side	b11	mm	1025-1425	1025-1425
DIMENSIONS					
4.2b	Height	h1	mm	see tables	see tables
4.3	Free lift	h2	mm	see tables	see tables
4.4	Lift height	h3	mm	see tables	see tables
4.5	Height with mast extended	h4	mm	see tables	see tables
4.9	Height of tiller arm / steering console (min./max.)	h14	mm	865 / 1420	1155 / 1550
4.15	Fork height, fully lowered	h13	mm	85	85
4.19	Overall length	l1	mm	1965	2085 / 2565
4.20	Length to fork face	l2	mm	815	935 / 1415
4.21	Overall width	b1/b2	mm	800 / 1140 - 1575	800 / 1140 - 1575
4.22	Fork dimensions (thickness, width, length)	s / e / l	mm	40 / 100 / 1150	40 / 100 / 1150
4.24	Fork carriage width	b3	mm	980	980
4.25	Outside width over forks (minimum / maximum)	b5	mm	260-900	260-900
4.32	Ground clearance at center of wheelbase, (forks lowered)	m2	mm	20	20
4.33c	Working aisle width (Ast) with 1000 x 1200 mm pallets, load crosswise, platform up/down	Ast	mm	2580	2690/3170
4.34c	Working aisle width (Ast) with 800 x 1200 mm pallets, load lengthwise, platform up/down	Ast	mm	2580	2690/3170
4.35	Turning radius	Wa	mm	1637	1757 / 2237
PERFORMANCE					
5.1	Travel speed, with / without load		km / h	6.0 / 6.0	6.0 / 6.0
5.2	Lifting speed, with / without load		m / s	0.15 / 0.32	0.15 / 0.32
5.3	Lowering speed, with / without load		m / s	0.43 / 0.34	0.5 / 0.34
5.8	Maximum gradeability with / without load		%	8 / 15	8 / 15
5.10	Service brakes (mechanical / hydraulic / electric / pneumatic)			Electric	Electric
ELECTRIC MOTORS					
6.1	Drive motor capacity (60 min. short duty)		kW	1.0	1.0
6.2	Lift motor output at 15% duty factor		kW	3.2	3.2
6.4	Battery voltage/capacity at 5-hour discharge		V/Ah	24 / 250 - 375	24 / 250 - 375
6.5	Battery weight		kg	210	210
MISCELLANEOUS					
8.1	Type of drive control			Stepless	Stepless
10.7	Whole-body vibration (EN 13 059:2002)		dB(A)	-	0.8
10.7.3	Hand-arm vibration (EN 13 059:2002)			< 2.5	< 2.5

Continuing improvement may lead to changes in these specifications

AXIA ES

**SBP16N3S/16N3SR
Series**

**PEDESTRIAN
STACKER WITH WIDE
STRADDLE AND
FOLDING PLATFORM**

1.6 tons



SBP16N3S

MAST PERFORMANCE AND CAPACITY

AXIA ES

SBP12-16N3 Series

PEDESTRIAN STACKER

1.2 – 1.6 tons

MAST TYPE	h3 + h13 mm	h1 mm	h4 mm	h2 + h13 mm
SBP12 / 16N3 / SBP12N3R				
SIMPLEX	1500	1950	1950	1500
DUPLEX	2500	1835	3000	200
	2900	2035	3400	200
	3300	2235	3800	200
	3600	2385	4100	200
	4300	2735	4800	200
DUPLEX FREE-LIFT	2500	1775	2940	1355
	2900	1975	3340	1555
	3300	2235	3800	1755
	3600	2385	4100	1905
	4300	2735	4800	2255
TRIPLEX	4100	1955	4640	-
	4300	2020	4840	-
	4700	2153	5240	-
	5400*	2385	5940	-
TRIPLEX FREE-LIFT	4100	1955	4640	1475
	4300	2020	4840	1540
	4700	2153	5240	1673
	5400*	2385	5940	1905

*) 16 only.

MAST TYPE	h3 + h13 mm	h1 mm	h4 mm	h2 + h13 mm
SBP16N3S / SBP16N3SR				
SIMPLEX	1500	2030	2030	1500
DUPLEX	2500	1915	3080	195
	2900	2115	3480	195
	3300	2315	3880	195
	3600	2465	4180	195
	4300	2815	4880	195
DUPLEX FREE-LIFT	2500	1915	3080	1355
	2900	2115	3480	1555
	3300	2315	3880	1755
	3600	2465	4180	1905
	4300	2815	4880	2255
TRIPLEX	4100	2035	4720	-
	4300	2100	4920	-
	4700	2233	5320	-
	5400	2465	6020	-
TRIPLEX FREE-LIFT	4100	2035	4720	1475
	4300	2100	4920	1540
	4700	2233	5320	1753
	5400	2465	6020	1905

h3+h13 = Lifting height
h1 = Lowered mast height
h4 = Raised mast height
h2+h13 = Free lift

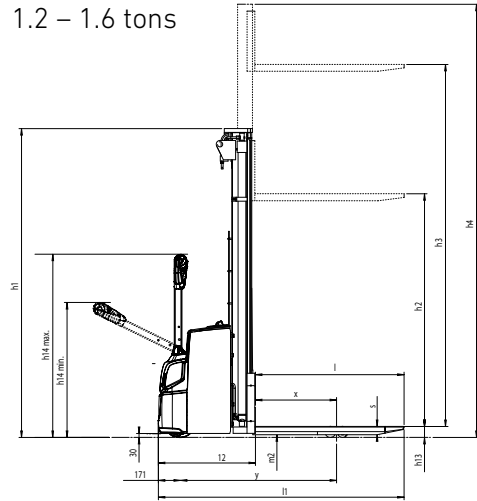
MAST PERFORMANCE AND CAPACITY

AXIA ES

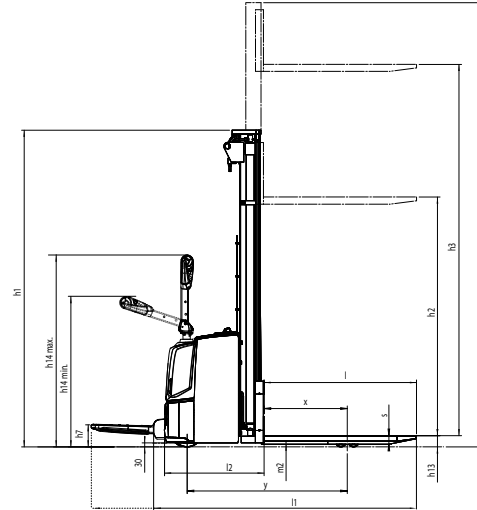
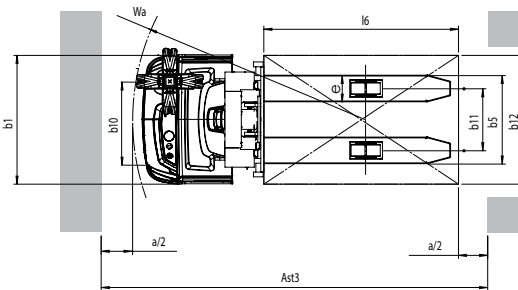
SBP12-16N3 Series

PEDESTRIAN STACKER

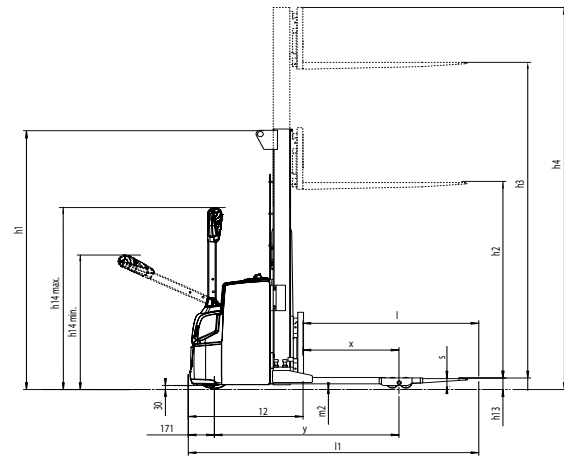
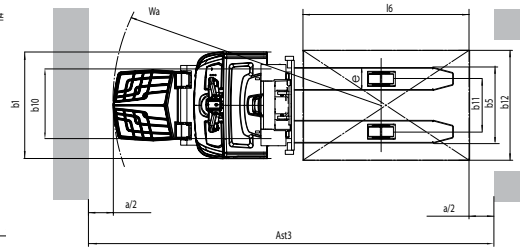
1.2 – 1.6 tons



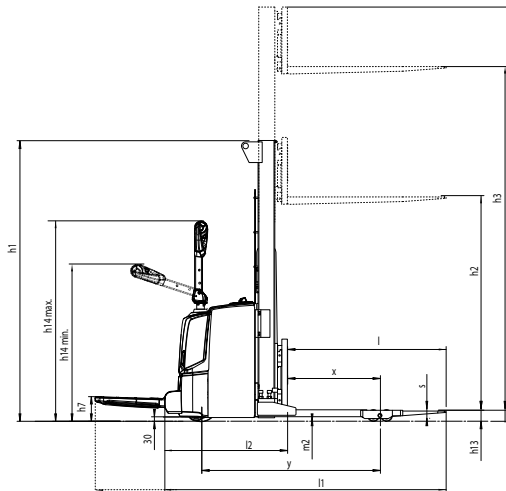
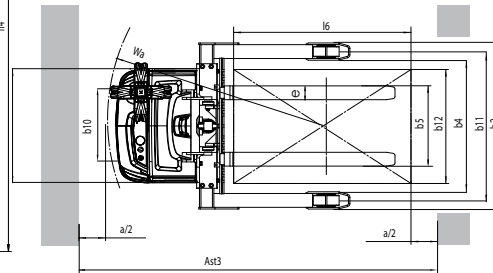
SBP12 / 16N3



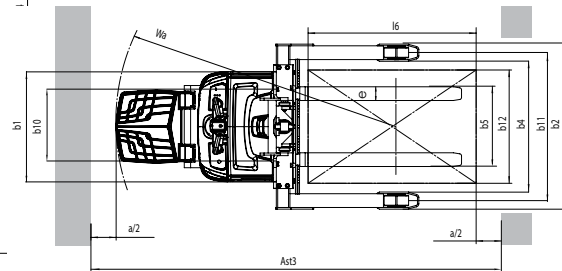
SBP12N3R



**SBP16N3S
WIDE STRADDLE**



**SBP16N3SR
WIDE STRADDLE
WITH FOLDING PLATFORM**



Ast = Working aisle width
Ast3 = Working aisle width (b12 < 1000 mm)
 $Ast = Wa + \sqrt{(l6 - x)^2 + (b12 / 2)^2} + a$
Ast3 = Wa + l6 - x + a

Wa = Turning radius
l6 = Pallet length
x = Load wheel axle to fork face
b12 = Pallet width
a = minimum recommended passing clearance = 2 x 100 mm

STANDARD EQUIPMENT & OPTIONS

- = Standard
- = Standard on initial lift models only
- = Option

	SBP12N3	SBP16N3	SBP12N3R	SBP16N3S	SBP16N3SR
GENERAL					
LED discharge indicator, no hour meter	●	●	●	●	●
PIN code login 4 codes	●	●	●	●	●
Electric on/off valve for lifting and lowering, controlled by rocker switch on tiller head	●	●	●	●	●
Polyurethane drive wheel	●	●	●	●	●
Single load wheels polyurethane	●	-	-	-	-
Tandem load wheels polyurethane	●	●	●	●	●
Adjustable width between straddle load legs; 900mm - 1300mm	-	-	-	●	●
Sideways battery change (250Ah battery only)	●	●	●	●	●
ENVIRONMENT					
Cold store design, 0°C to -35°C	●	●	●	●	●
DRIVE AND LIFT CONTROLS					
Tiller up drive	●	●	●	●	●
WHEEL OPTIONS					
Polyurethane traction and load wheels	●	●	●	●	●
Power friction traction wheel	●	●	●	●	●
OTHER OPTIONS					
Speed reduction 0,5km/h above 1000 mm lift, duplex and triplex masts without free lift	●	●	●	●	●
Speed reduction 0,5km/h above free lift, duplex and triplex masts with free lift	●	●	●	●	●
Side stabilizers	●	●	●	●	●
Built-in charger, 30A	-	●	-	-	-
Key switch	●	●	●	●	●
Special RAL color	●	●	●	●	●
Load backrest	●	●	●	●	●
Accessory rack	●	●	●	●	●
List bracket, A4 size	●	●	●	●	●

AXIA ES SBP12-16N3(R)(S) Series PEDESTRIAN STACKER 1.2 – 1.6 tons



Standard tiller head



Side stabilizers

WHEN RELIABILITY IS EVERYTHING...



AXIA
THE ALL ROUNDER

With a name that reflects its manoeuvrability, AXIA combines award-winning ergonomics with high performance and low maintenance features to deliver a complete warehouse support package.

Efficient, versatile and durable, AXIA is the perfect choice for every workplace.

Like any product bearing the "MITSUBISHI" name our materials handling equipment benefits from the tremendous heritage, huge resources and cutting-edge technology of one of the world's largest corporations – Mitsubishi Heavy Industries Group.

Engineering spacecraft, jet planes, power plants and more, MHI specializes in those technologies where performance, dependability and superiority decide your success or failure...

So when we promise you quality, reliability and value for money, you know it's a guarantee we have the power to deliver.

That's why every model in our award-winning and comprehensive range of lift trucks and warehouse equipment is built to a high specification – to ensure it keeps working for you. Day after day. Year after year. Whatever the job. Whatever the conditions.

YOU'LL NEVER WORK ALONE

As your local authorized dealer, we are here to keep your trucks working – through our extensive experience, our technical excellence and our commitment to customer care.

We are your local experts, backed by efficient channels to the entire organization of Mitsubishi Forklift Trucks.

No matter where you are, we are close by – with the capability to meet your needs.

Discover how Mitsubishi Forklift Trucks give you more from your local authorized dealer or when you visit our website www.mitforklift.com

Performance specifications may vary depending on standard manufacturing tolerances, vehicle condition, types of tires, floor or surface conditions, applications or operating environment. Trucks may be shown with non-standard options. Specific performance requirements and locally available configurations should be discussed with your distributor of Mitsubishi forklift trucks. We follow a policy of continual product improvement. For this reason, some materials, options and specifications could change without notice.

info@mitforklift.com

WESM2239 (08/22) © 2022 MLE

